

## Why is a Levy Needed?

- In the last 2 years, Emmett School District, has lost \$3 million in funding due to drop in enrollment and decreases in state and federal funding. **Despite enrollment being up** for the 10-11 school year, Emmett School District is expecting a total **budget shortfall of 1.9 million dollars** for the 11-12 school year, with 1.7 million due to state & federal cuts.
- With past and present budget cuts ESD has reached the point where **we cannot cut any more without hindering the education** of our children.

## What About The Last Levy?

Emmett School District is using the funds from the last levy as they were voted on by the community. With the funds from the levy passed in May of 2009, the following has been **completed**:

- **Air conditioning** has been installed at the High School
- **Phones** are in every classroom
- Increase in **technology** bandwidth
- **Contingency** fund established
- Building **Maintenance**

The following projects are **underway**:

- Junior High **locker rooms**
- Junior High **parking lot**
- **Science lab equipment**
- Improvement to **technology infrastructure**
- New **computers**

## FAQ

### When is the election?

Tuesday, May 17, 2011 8am-8pm

### What precinct do I vote in?

Voters must vote precinct in which they reside. A map of the precincts can be found at <http://www.co.gem.id.us/maps/County-Wide-Precinct%20Map.pdf> or contact the Gem County Clerk at 208.365.4561

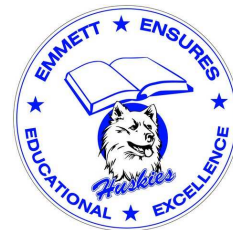
### Where do I go to vote?

#### Precinct

- 01 Central
- 02 North Emmett
- 03 Butteview
- 04 South Emmett
- 05 West Emmett
- 06 Emmerson
- 07 Lincoln
- 08 Letha
- 09 Hanna
- 10 Brick
- 11 Bench
- 12 Sweet/Montour
- 13 Ola
- 14 Absentee

#### Polling Place

- Catholic Church
- American Legion Hall
- Community Bible Church
- Lutheran Church
- 4H Building/Co Fairgrounds
- 4H Building/Co Fairgrounds
- Armory
- Letha LDS Church
- Letha LDS Church
- Nazarene Church
- Nazarene Church
- Sweet School
- Ola Community Hall
- Gem Co Courthouse



Emmett School District  
601 E Third Street  
Emmett, Idaho 83617  
<http://emmett.groupfusion.net/>  
Phone: 208-365-6301

## Independent School District of Emmett #221



## Everyone Plays a Part

The proposed levy for \$2 million over the next two years will help Emmett School District cover the funding shortfalls due to drastic decreases in state and federal funding. The proposed levy will replace the current levy that expires in June 2011, **reducing** the amount of taxes being paid.

The funds made available through this levy will help keep the forward motion and progress of student achievement in Emmett by:

- Maintaining **manageable class sizes**
- **Preventing loss** of educational programs, athletics, and activities
- Maintaining **safety & instructional staff** such as resource officer, instructional aides, tiered learning groups, and catalyst.

**THE LEVY WILL NOT BE USED TO PAY FOR INCREASES TO SALARIES AND BENEFITS.**

## What has the Emmett School District Done to Address the State Funding Cutbacks?

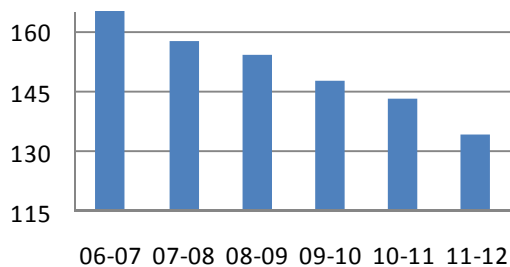
From the 2006-2007 school year to this current school year the district has:

- **Reduced 23 teachers** from 166 to 143
- **Reduced 2.4 administrators** from 11.7 to 9.3
- Induced **salary freezes** for staff
- **Reduced teacher salaries** by 5.5%
- **Reduced administrators salaries** by 6.5%

Planned cuts for the 11-12 school year:

- **Consolidating schools** for the 11-12 school year saving \$240,000 in 2011-2012 school year and ongoing **savings of \$300,000 per year** for following school years.
- **Reducing** an additional 9 staff positions for a total of **16 certified, classified, and administrative positions** with the consolidation.
- **Despite cuts and consolidations**, Emmett School District is expected to have a **budget shortfall of \$1,116,393** for the 11-12 school year.

### Reduction in Teachers



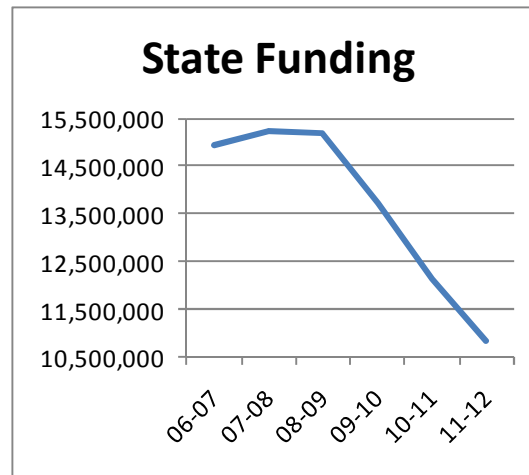
## What Will The Levy Cost Me?

The proposed levy will replace the current levy that will expire in June 2011.

With the **current** levy in place, residents are paying **2.13/\$1000** in taxable value. Under the **proposed levy** the rate would be **1.25/\$1000** in taxable value, resulting in a **reduction of approximately 38%**.

As an example, a property owner with an assessed value of \$100,000 with the current levy **pays \$213/yr.** Under the **proposed levy** the owner would **pay \$125/yr.** Resulting in a **reduction of approximately \$88/yr** per \$100,000 in assessed taxable value.

## Student Revenue From State

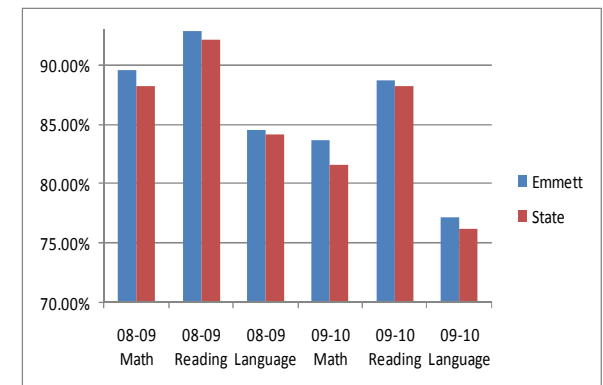


Since the 06-07 school year, the **state funding** has been **reduced by \$2,808,288** and is expected to **continue to decrease to \$4,131,071** by the 11-12 school year.



## Worth Investing.....

The last two years **Emmett students** have **performed higher** than the **state average** on the ISAT tests



## Questions?

For questions or more information about the levy please contact the Emmett School District Office at 365-6301 or any of our Board of Trustees:

- Chris Roeper-thegrimroeper@hotmail.com
- Maria Salazar-mariams194@msn.com
- Mark Maxfield-mark@thecottages.biz
- Maureen Rose-marose@att.net
- Scott Ethington-bigredduroc@gmail.com
- Tammy Davis-tammyd221@yahoo.com